

Draft Local and Community Development Programme Plan

Overview of Presentation

- Key Facts about the Organisation
- Organisational Context
- Key Principles Underpinning Draft LCDP Plan
- The Plan

Jargon Buster

- Building for the Future (2010 – 2012)
- LCDP
- Pobal
- LCDP Plan

Key Facts about Southside Travellers

- Resource Centre with county wide remit
- Funded to the tune of €712K in 2009 (not including allowances to women and tutor fees)
- First point of contact for 140 Traveller families in the county
- Lifecycle approach (programme participants aged 2 to 60)
- Resource Centre open 9am – 9pm Monday to Thursday and 9am – 5pm Friday
- Open community activities in evenings
- 5 integrated programmes – community health and well-being, accommodation and advocacy, children and young people, education, training and employment, finance, administration and resource centre management
- Additional one to one literacy, numeracy and specific skills (Driver Theory) available to non programme participants
- Community Internet Access
- Specific Traveller Culture Awareness Training Programme available to partner organisations
- 36 staff
- 29 of whom are community members
- Work with at least one member of each of the 140 Traveller families
- 120 community members through the centre every week
- 80 young people participate in youth programme per week

Organisational Context

- Our Strategy: Building for the Future (2010 – 2012)
- LCDP funding accounts for less than one sixth of overall organisational funding
- Specific Management and Co-Ordination Functions funded by LCDP and are defined as **Core Development Objectives** in Building for the Future
- Thus, LCDP plan developed within this context
- So.....

Our Vision, Mission and Values

Vision

Southside Travellers Action Group envisions an Ireland where the human and civil rights, hopes and distinct cultural identity of Travellers are acknowledged and respected

Mission

Operating on community development principles and practice, we design, develop and deliver integrated programmes which clearly respond to the identified needs of Travellers living in Dun Laoghaire /Rathdown

Core Values

Traveller leadership and participation at all levels

Advocating for Equality

Working in Partnership

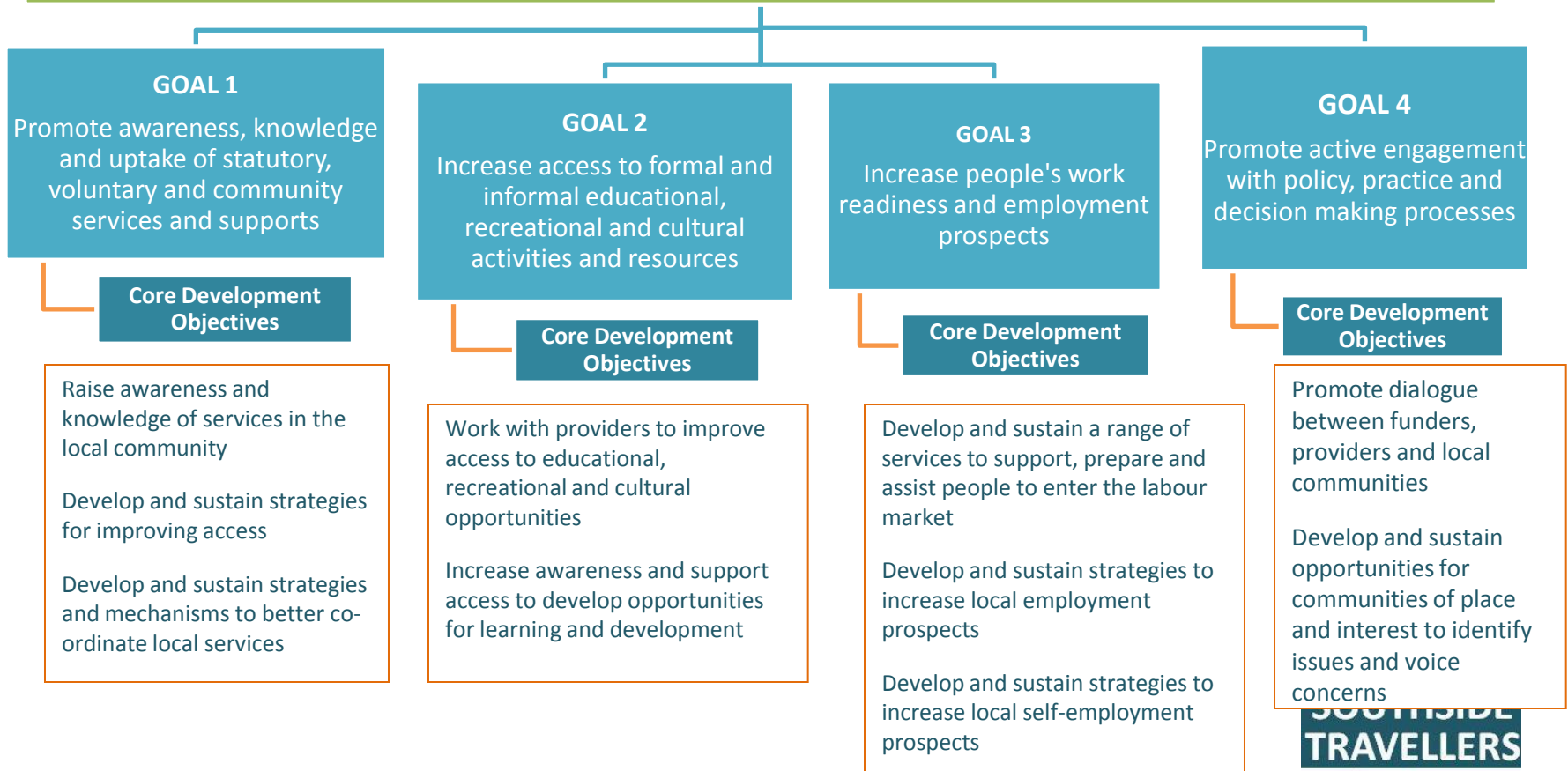
Promoting Accountability

**SOUTHSIDE
TRAVELLERS**

 action group

Core Development Objectives

Tackle poverty and social exclusion through partnership and constructive engagement between government and its agencies and people in disadvantaged communities



**SOOTHSIDE
TRAVELLERS**

action group

Key Principles Underpinning LCDP

- Spine rather than Core Funding from LCDP for Organisation
- For every € from LCDP we lever an additional €6.12
- All actions within remit of both Director and Finance and Administration Manager
- Real and meaningful actions defined – no bull, not worth it!

The Plan

- 25 actions – defined by LCDP goal and objective
- Broken down by beneficiaries, LCDP staffing spend in euros, % LCDP staffing spend, % LCDP spend per action / goal and complementary spend in euros

GOAL 1 Actions: 62.66% of LCDP Spend

- Establishment and co-ordination of monthly in-house information and referral sessions
- Design, development and dissemination of series of Southside Travellers Leaflets on our programmes
- Re-design and launch of www.southsidetravellers.ie
- Design, development and dissemination of twice yearly newsletter – **The Southside Traveller**
- Co-Ordinate accomodation and health outreach programmes
- Establishment of a series of monthly service information events at Southside Travellers Resource Centre
- Co-Ordination, Management and Supervision of Southside Travellers Action Group Resource Centre Programme and Monitoring of Achievement of *Building for the Future: Southside Travellers Action Group Strategic Plan (2010 – 2012)*
- Financial Management
- Actively participate in Local Co-Ordination Infrastructure

GOAL 2: 6.31% of LCDP Spend

- Work with families, early education providers to enhance opportunities for Traveller children / parents to access ECCE
- Support design, development and implementation of Local Training Initiative (LTI) programme
- Work with youth service support agencies to develop integrated responses within the context of our children and young people's programme
- Work with further education / third level to support progression pathways for LTI participants and community members
- Development of Traveller Culture Awareness Programme for implementation with partner community, voluntary and statutory organisations in Dun Laoghaire / Rathdown
- Enhance – through children and young people's programme – opportunities for Traveller young people and adults to access locally available sports and recreational activities
- Provision of information and support to community members wishing to progress

GOAL 3: 7.71% LCDP Spend

- Provide ongoing developmental support to our Education, Training, Employment and Enterprise Services and Support Programme to facilitate progression from our education and supported employment programmes
- Develop specific initiatives to support the development of our employment support service
- Development of formal linkages with enterprise development supports in FAS/Southside Partnership

GOAL 4: 23.26% LCDP Spend

- Putting in place of Southside Travellers House Forum
- Putting in place of Southside Travellers Youth Forum
- Supports for specific initiatives to support community members to actively engage with funders and providers – through Local Traveller Accommodation Consultative Committee, Traveller Health Unit, Southside Travellers Drugs Awareness Steering Group etc.
- Ongoing developmental support for Traveller members of Board of Southside Travellers Action Group
- Develop and sustain specific and focused outputs from all Southside Travellers Programmes
- Actively engage community members in various social inclusion structures throughout DLR County